

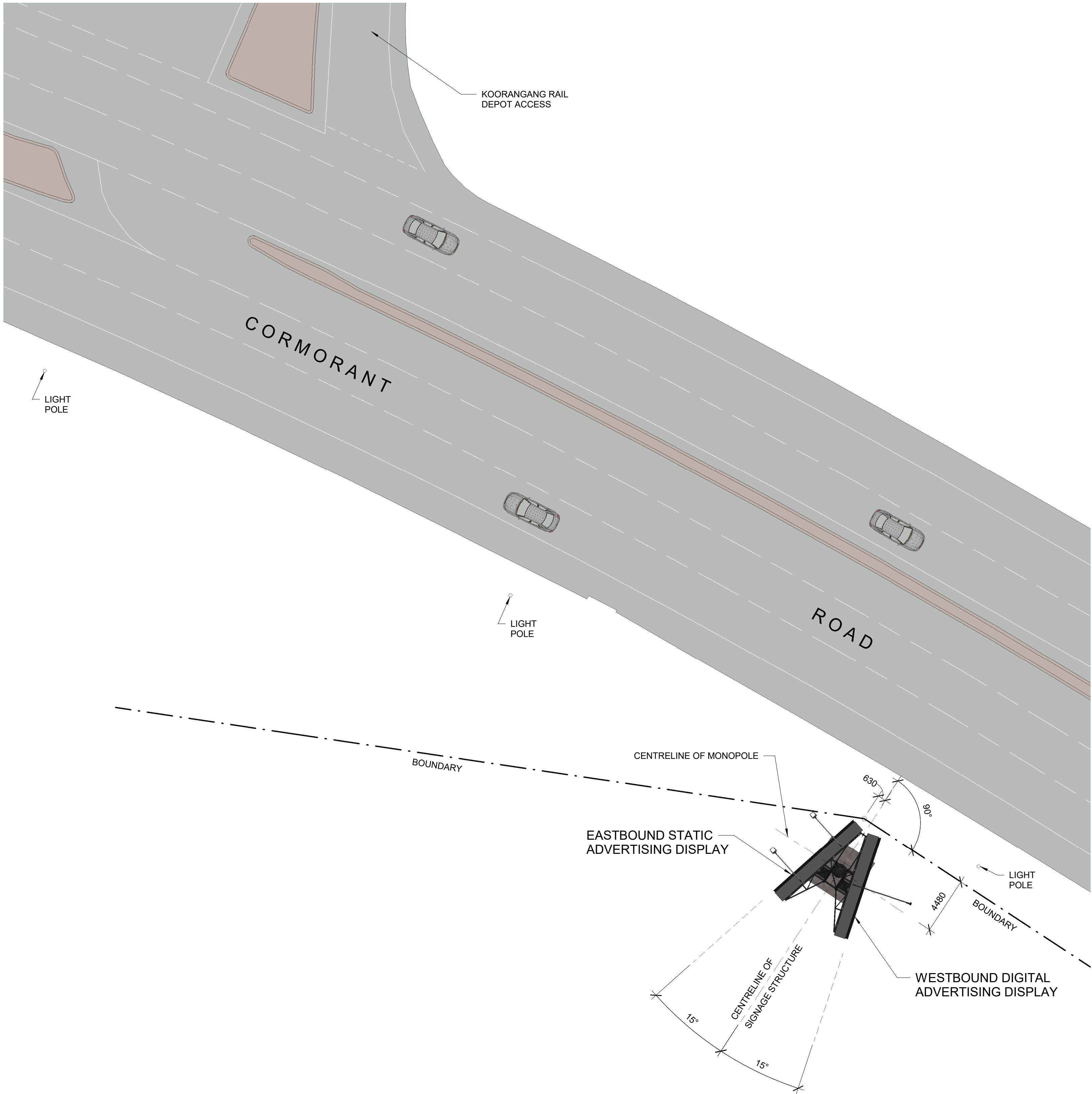


1. SCALES AS SHOWN.
2. DIMENSIONS SHOWN ARE IN MILLIMETRES.
3. CLADDING TO BASE AND SIDES SHALL BE 'LOCKER GROUP' PERFORATED MESH R20411T - 2.0mm ALUMINIUM SHEET OR APPROVED EQUIVALENT POWDER COATED PAINT 'COLOUR' 'MONUMENT'.
4. MONOPOLE AND ASSOCIATED STEELWORK TO BE PAINTED - 'COLOUR' 'MONUMENT'.
5. EASTBOUND STATIC ADVERTISING SIGN EQUIPPED WITH 2 No. OVERHEAD 'TIGER' LED SHOEBOX LIGHTS ON SUPPORT ARMS.
6. WESTBOUND DIGITAL ADVERTISING SIGN EQUIPPED WITH WEBCAM ON SUPPORT ARM.



LOCALITY PLAN

NOT TO SCALE



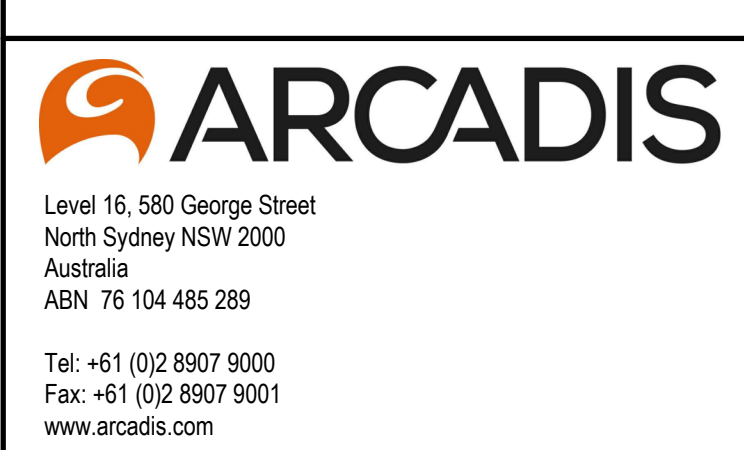
GENERAL ARRANGEMENT SIGNAGE PLAN

SCALE 1 : 200

[illegible]

| | | |
|---|-------------|--------------------------|
| Issue | Description | Date |
| Status <div style="text-align: center; font-size: 1.5em; font-weight: bold;">PRELIMINARY</div> <div style="text-align: center; font-weight: bold;">NOT TO BE USED FOR CONSTRUCTION</div> | | |
| Scale | 1:200 | Current Issue Signatures |
| Original Size | A1 | Drawn Author |
| | | Designed Designer |
| Height Datum | DATUM | Checked Checker |
| Grid | Grid | Approved Approver |

Filename: C:\Users\csaz2915\OneDrive - ARCADIS\Port Newcastle\10 Drawings\Cormorant #10(Recovery).rvt



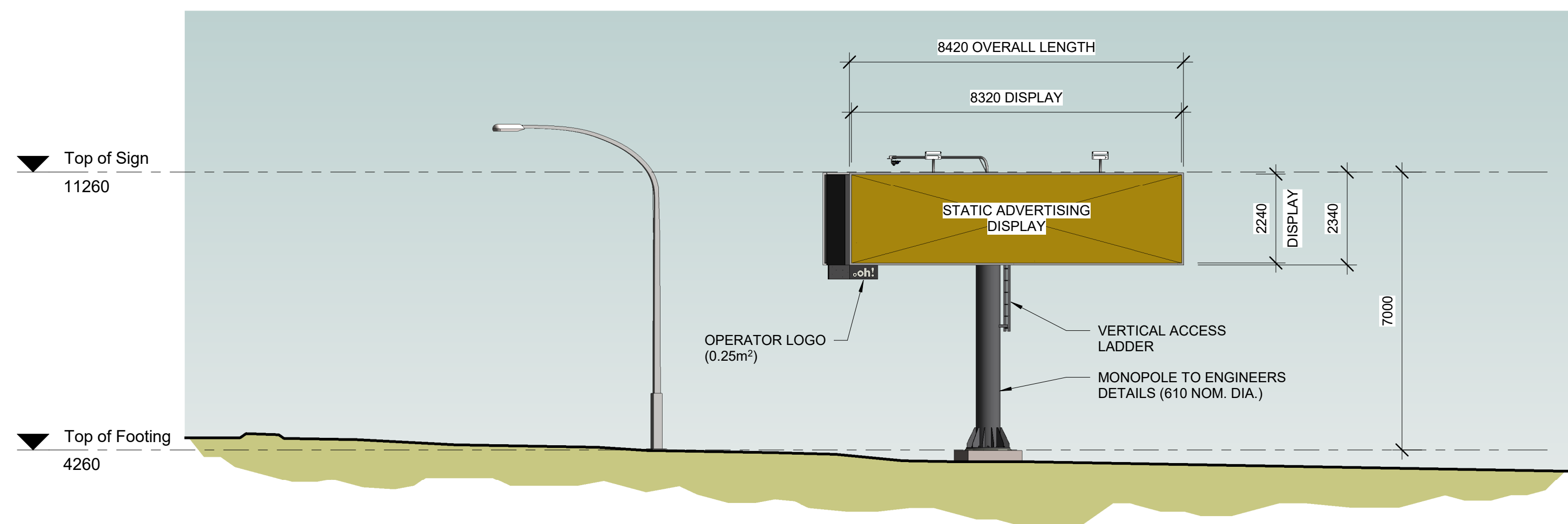
Project

PORT OF NEWCASTLE
PROPOSED ADVERTISING
STRUCTURE CORMORANT ROAD,
KOORAGANG

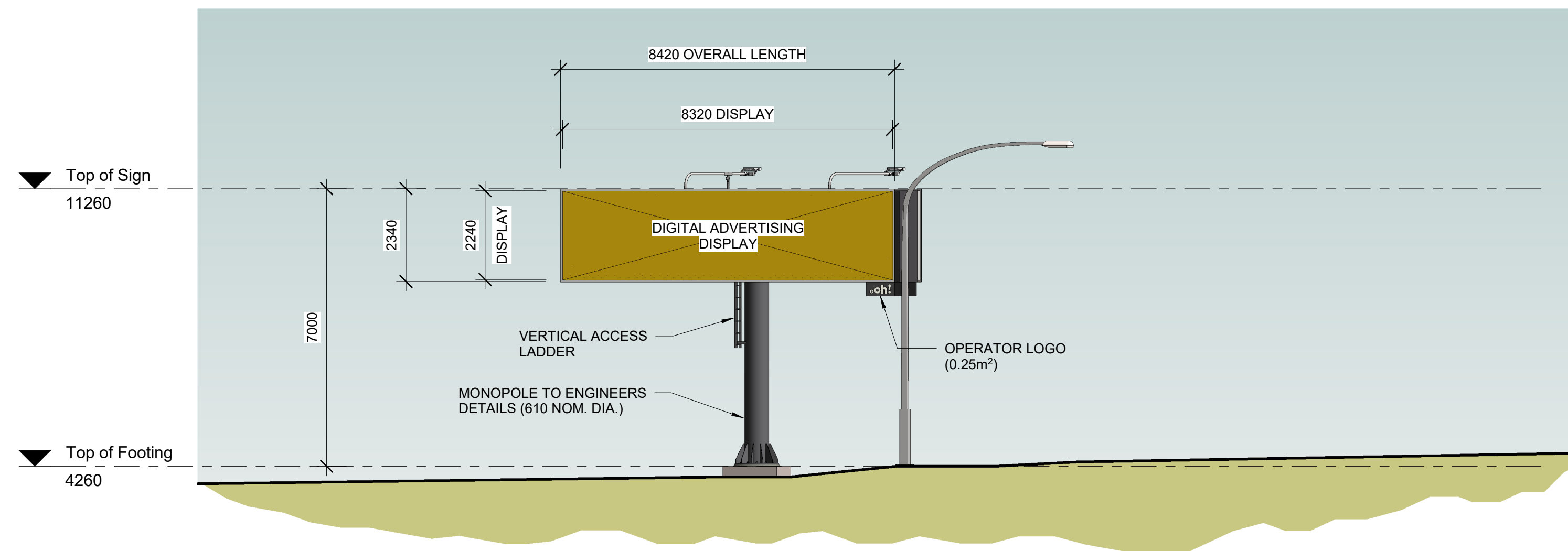
| | |
|-------|----------------------------------|
| Title | GENERAL ARRANGEMENT - SHEET 1 |
|-------|----------------------------------|

| | | |
|-------------|--------------|-------|
| Drawing No. | Project No. | Issue |
| DA.01 | 30086453-19A | 3 |

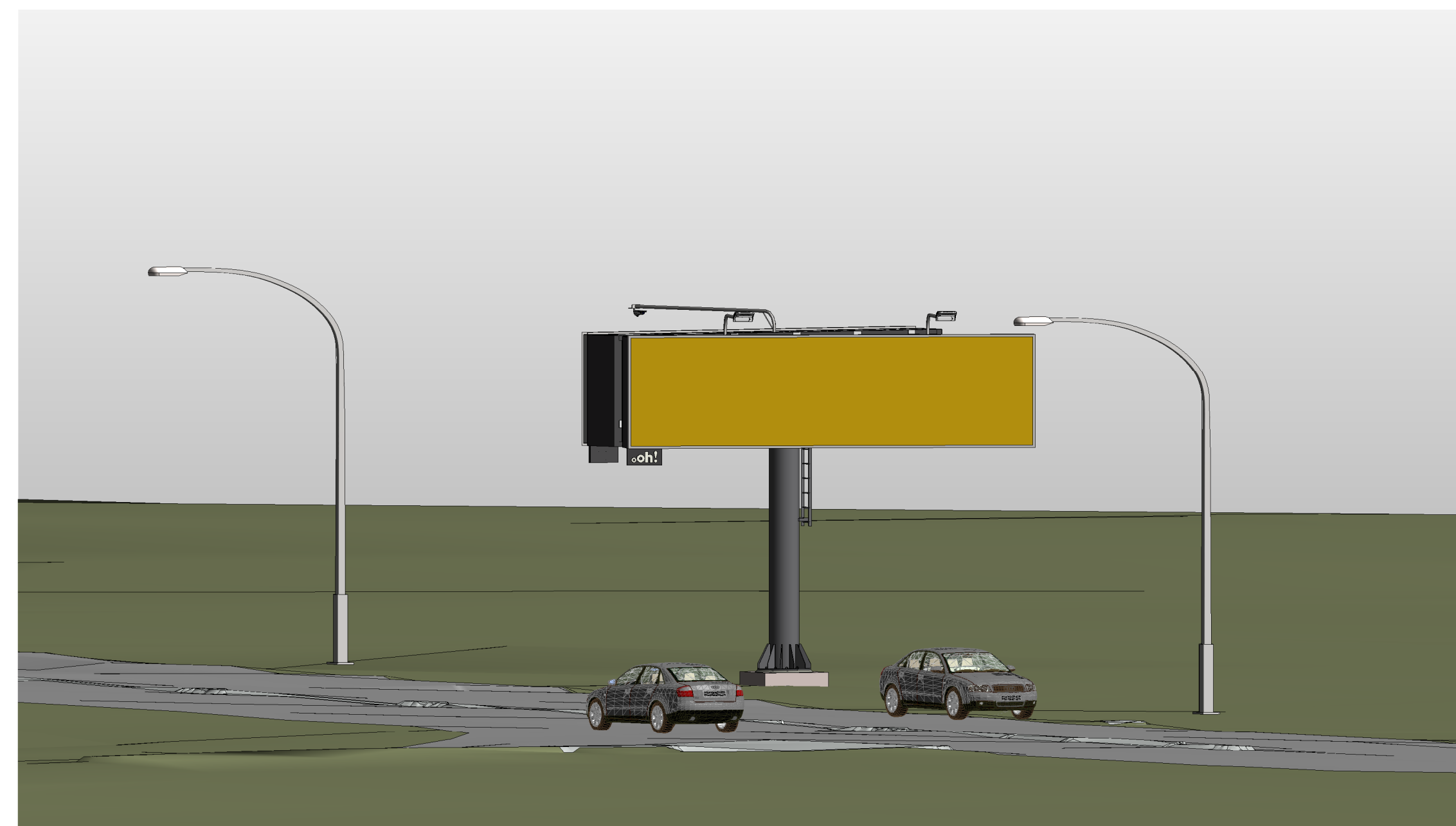
Date Plotted: 21/03/2022 10:24:51 AM



EASTBOUND ADVERTISING SIGNAGE ELEVATION



WESTBOUND ADVERTISING SIGNAGE ELEVATION

3D VIEW

NOTES

1. SCALES AS SHOWN.
2. DIMENSIONS SHOWN ARE IN MILLIMETRES.
3. CLADDING TO BASE AND SIDES SHALL BE 'LOCKER GROUP PERFORATED MESH R202141'. 2.0mm ALUMINIUM SHEET OR APPROVED EQUIVALENT POWDER COATED PAINT COLOUR 'MONUMENT'.
4. MONOPOLE AND ASSOCIATED STEELWORK TO BE PAINTED - COLOUR 'MONUMENT'.
5. EASTBOUND STATIC ADVERTISING SIGN EQUIPPED WITH 2 No. OVERHEAD 'TIGER' LED SHOEBOX LIGHTS ON SUPPORT ARMS.
6. WESTBOUND DIGITAL ADVERTISING SIGN EQUIPPED WITH WEBCAM ON SUPPORT ARM.

[illegible]

| | | |
|---|-----------------------------|----------|
| 3 | FASCIA SKIRT REMOVED | 21/03/22 |
| 2 | RE-ISSUED FOR CLIENT REVIEW | 03/03/22 |
| 1 | ISSUED FOR CLIENT REVIEW | 03/03/22 |

| Issue | Description | Date |
|-------|-------------|------|
|-------|-------------|------|

Status

PRELIMINARY
NOT TO BE USED FOR CONSTRUCTION

| | | | |
|-------|---------|--------------------------|--|
| Scale | 1 : 100 | Current Issue Signatures | |
| | | Drawn Author | |

| | | | |
|---------------|----|-------------------|--|
| | | Author | |
| Original Size | A1 | Designed Designer | |
| Height | | Client | |

| | | | |
|-----------------|-------|----------------------|--|
| Height Datum | DATUM | Checked Checker | |
| Grid | Grid | Approved Approver | |

| | |
|-----------|---|
| Filename: | C:\Users\csaz2915\OneDrive - ARCADIS\Port Newcastle\10 Drawings\Cormorant #10(Recovery).nvt |
| Client | |



Level 2, 73 Miller Street
North Sydney NSW 2060

Tel:
+61 (0)2 9927 9555



Level 16, 580 George Street
North Sydney NSW 2000

Australia
ABN 76 104 485 289

Tel: +61 (0)2 8907 9000
Fax: +61 (0)2 8907 9001
www.arcadis.com

PORT OF NEWCASTLE PROPOSED ADVERTISING

STRUCTURE CORMORANT ROAD,
KOORAGANG

| | |
|-----------|--|
| ROORAGANG | |
| Title | |

GENERAL ARRANGEMENT -
SHEET 2

SHEET 2

| | | |
|-------------|----------------|-------|
| Drawing No. | Project No. | Issue |
| DA.02 | —30086453-19A— | 3 |

Date Plotted: 21/03/2022 10:24:54 AM